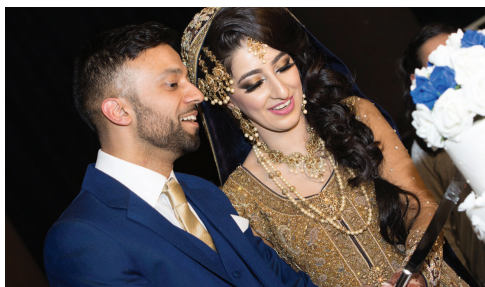


# ASIAN & ETHNIC WEDDINGS AT THE ICONIC DEVONSHIRE DOME



As one of the most dramatic spaces in the UK, the Devonshire Dome offers a breath taking backdrop to your wedding celebrations. Your special day has to be perfect and by hosting your wedding with us you are inviting your guests to celebrate with you under the largest Dome in Europe.

Attention to detail is at the heart of everything we do, and our experienced **Event Manager** will help plan your celebrations every step of the way leaving you to relax and enjoy your wedding day.



# Wedding Costs for the Devonshire Dome

At the Dome we appreciate that the budgeting process is an important part of the planning and so to help, the Devonshire Dome has designed a venue hire package and listed all the costs you need to consider for your wedding.

## Venue Hire Package:

Exclusive use of the Devonshire Dome from 6.30am to midnight on the day of the wedding (set up day prior subject to availability)

Personal Wedding Planner as your contact from your initial enquiry through to the wedding day

Hire of kitchens

Kitchen supervisor on site

Changing rooms as required

Prayer rooms, mats and washing facilities as required

Staging blocks (maximum build 25ft x 10ft)

Black and white dance floor (22ft x 22ft)

Up to 300 silver banqueting chairs

Up to 30 round banqueting tables

Support tables including reception drinks table, top table and cake table

Security and car park staff

Use of the Devonshire Dome's grounds for photographs



**£6000 inclusive of VAT**

## Additional Items to Consider:

Additional chairs (based on numbers over 300)	£3.50 each
Additional tables (based on numbers over 300)	£12.00 each
Starter, Main and Dessert crockery and cutlery package	£2.50 per person
Reception drinks and table glassware	£1.50 per person
Lay up of tables by Dome staff	£150.00
White linen table cloths	£10.00 each
White linen napkins	£0.50 each
Use of Sweet cart and jars (client to provide sweets)	£150.00
Limited number of décor items prices available on request	

Maximum number of guests: 600

**For further information or to arrange a viewing,  
please contact Christine Sweetmore on 01332 594643  
or email [c.sweetmore@derby.ac.uk](mailto:c.sweetmore@derby.ac.uk)**

